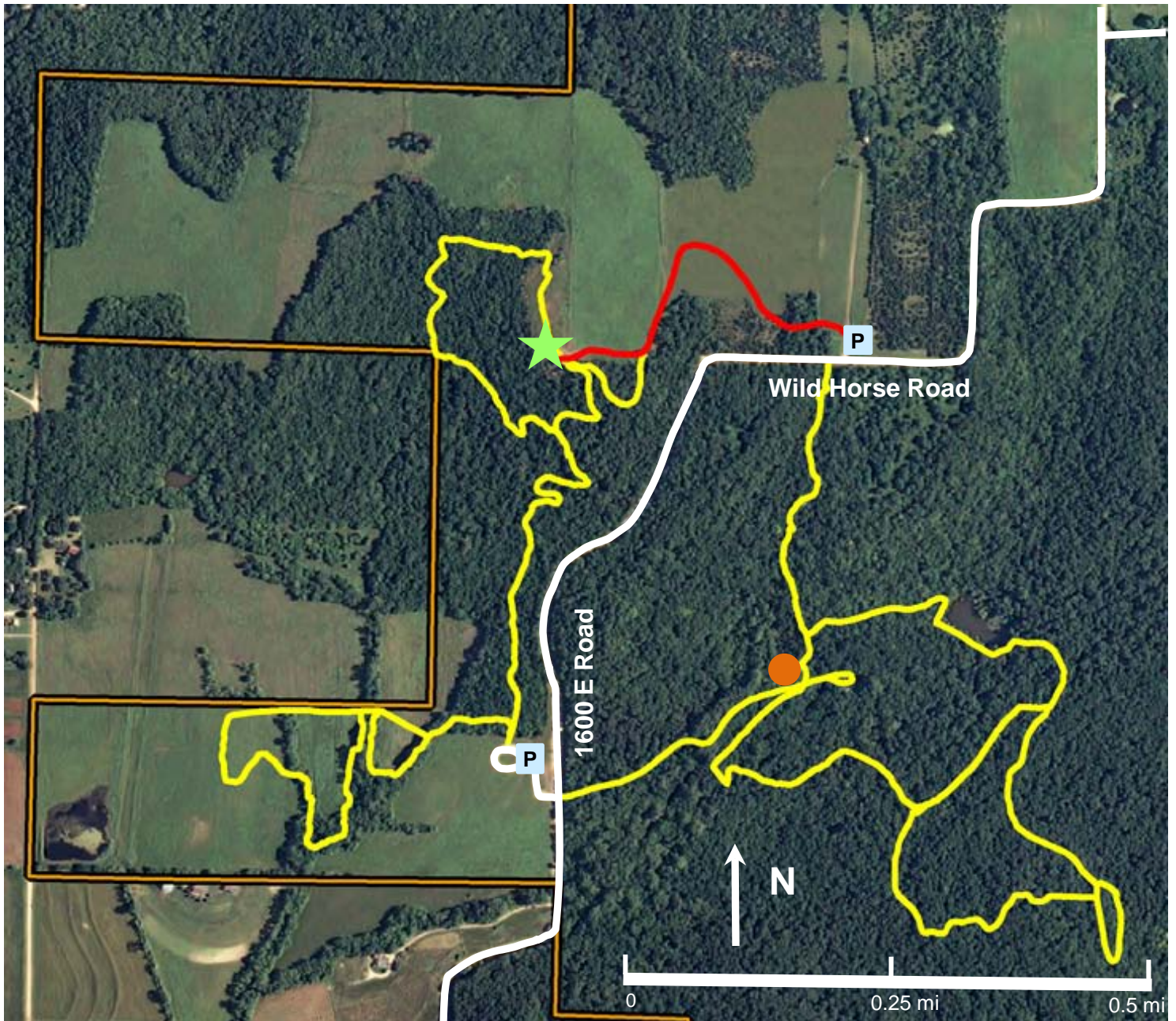


KU Field Station Trails System



Welcome to the KU Field Station

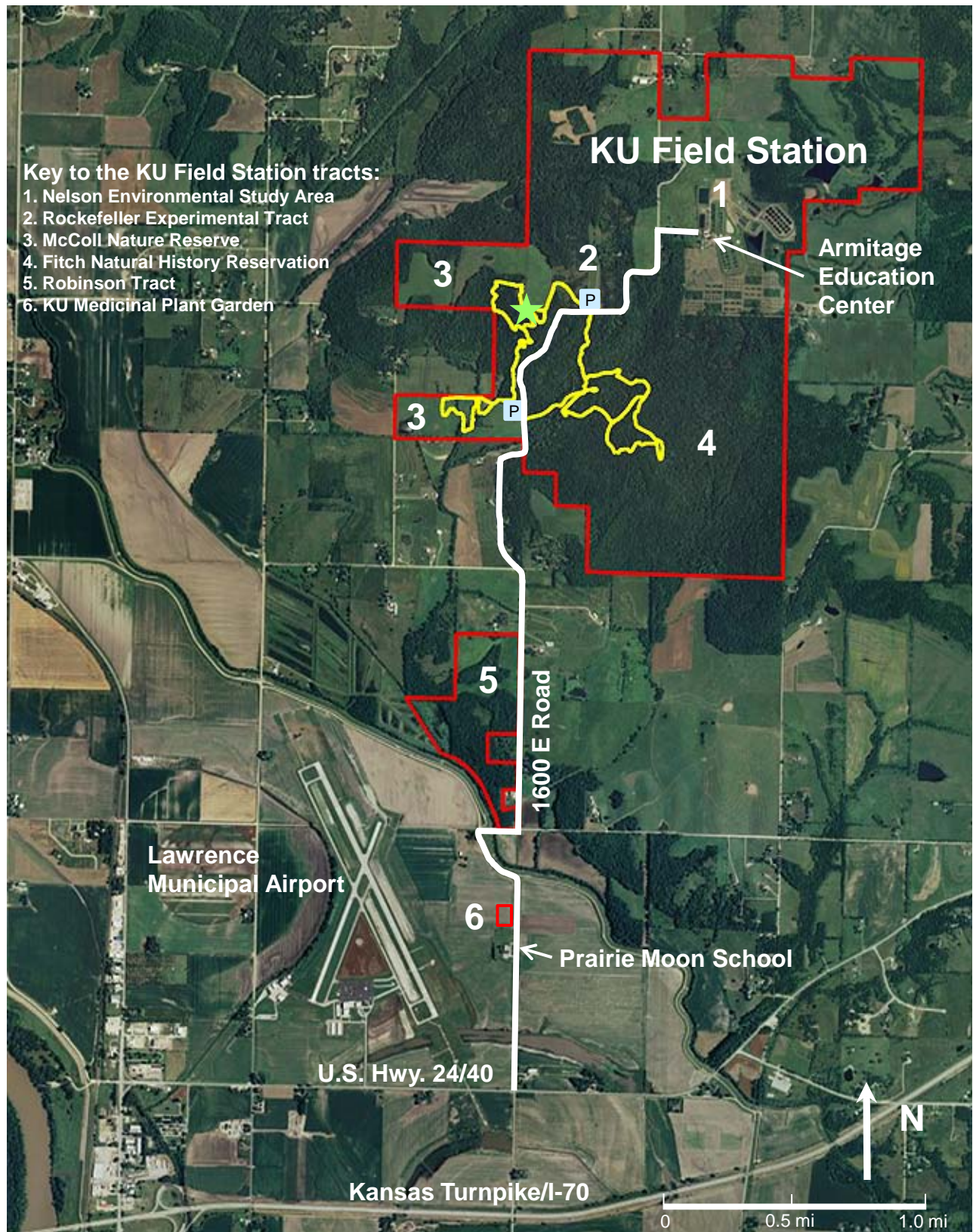
Legend

- ★ Kaw Valley Overlook
- P Trailhead with parking
- Trails
- Handicapped-accessible trail
- Gravel road
- Restroom/drinking fountain

Please note that access to some portions of the KU Field Station are restricted. Trails shown here are open to the public and subject to the following rules:

- Trails are open dawn to dusk ONLY.
- Foot traffic ONLY.
- Stay on the marked trails.
- Dogs or other pets are not allowed (even if leashed).
- Do not release wild or domestic animals or plants.
- Do not disturb flags, markers, traps, or equipment.
- Hunting or collecting of any kind is strictly prohibited.
- Smoking, fires of any kind, and fireworks are prohibited.
- Firearms and paint ball guns are prohibited.
- Alcoholic liquors and cereal malt beverages are prohibited.

Enjoy your visit, and thank you for respecting this natural environment and the research conducted here. For more information, contact the station field office (785-843-8573), administrative office (864-1540), or visit www.kufs.ku.edu.



Legend

- Kaw Valley Overlook
- Trailhead with parking
- Gravel road
- Trails
- Field Station boundary

The mission of the University of Kansas Field Station is to foster scholarly research, environmental education, and science-based stewardship of natural resources.

The KU Field Station is operated by the Kansas Biological Survey.